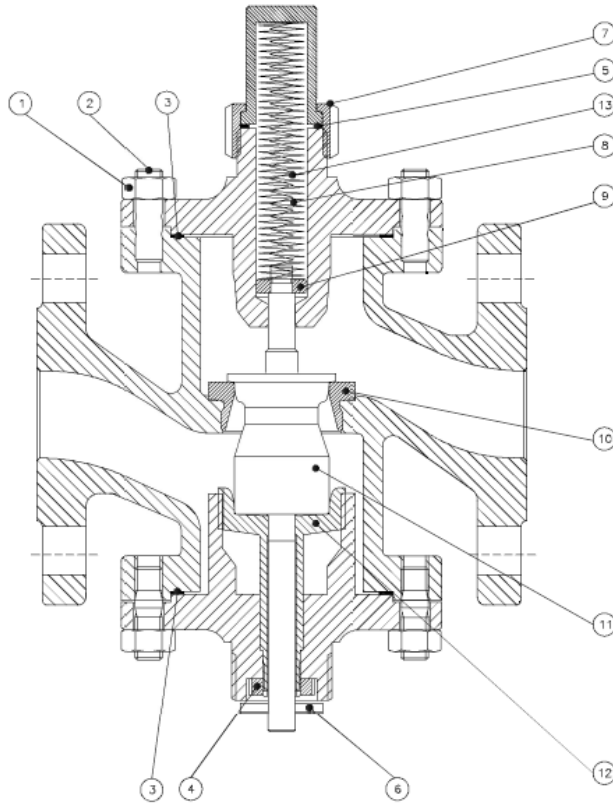


H2FR SPARE PARTS

2-way Control Valves

Cast steel, PN 40, DN 20-80 mm, 2 Seats, Reverse acting

S-2.4.09-A



VALVE DN20-65 M-G-H2FR
VALVE DN80 M-G2FR
VALVE DN80 H2FR

Pos.	Component
1	Nut
2	Stud bolt
3	Gasket
4	Gasket
5	Gasket
6	Nut
7	Nut
8	Spring
9	Disc
10	Cone
11	Seat
12	Lower seat
13	Spring

Packing set components pos.	Pos.	Valve	Item No.	Trim set components pos.	Pos.	Valve	Item No.
	1 to 5	20 H2FR	1-2991345		1 to 12	20 H2FR	1-2990806
	1 to 5	25 H2FR	1-2991349		1 to 12	25 H2FR	1-2990808
	1 to 5	32 H2FR	1-2991352		1 to 12	32 H2FR	1-2990810
	1 to 5	40 H2FR	1-2991355		1 to 12	40 H2FR	1-2990938
	1 to 5	50 H2FR	1-2991360		1 to 12	50 H2FR	1-2990911
	1 to 5	65 H2FR	1-2991363		1 to 13	65 H2FR	1-2991427
	1 to 5	80 H2FR	1-2991367		1 to 13	80 H2FR	1-2991431

Clorius Controls A/S

Kajakvej 4 · DK-2770 Kastrop · Denmark
Tel: + 45 77 32 31 30 · Fax: +45 77 32 31 31
E-mail: mail@cloriuscontrols.com
Web: www.cloriuscontrols.com

Clorius
CONTROLS